



 TriMark®



Volume 8

THIS YEAR'S  
**trendsetters**

ECLECTIC TABLETOP • VINTAGE & NOSTALGIA • VISIBLE CLEANLINESS  
TIK TOK • CATERING REIMAGINED • TAKE-OUT & DELIVERY



# TABLE OF CONTENTS

## ECLECTIC TABLETOP

---

- 04 Clean Lines
- 06 Accent Pieces

## VINTAGE & NOSTALGIA

---

- 08 Timeless Patterns
- 09 Old-Fashioned Charm
- 11 Plating Perfection
- 12 Fine Dining

## VISIBLE CLEANLINESS

---

- 14 Antimicrobial Protection
- 15 Food Safety
- 16 Hands-Free Operation
- 17 Janitorial & Storage

## TIK TOK

---

- 19 Unique Experiences
- 21 Food Prep

## CATERING REIMAGINED

---

- 23 Buffet Excellence
- 25 Outdoor Dining
- 26 Small Footprints
- 27 Off-Premises & Outdoors

## TAKE-OUT & DELIVERY

---

- 29 Sustainable Solutions
- 31 Cooking & Holding
- 32 Order Efficiency
- 34 Deliver In Style

# ECLECTIC TABLETOP

MIX & MATCH YOUR WAY TO PERFECTION

Whether you choose the clean lines of stoneware or the unique colors of durable melamine, this year is all about interesting tablescapes. Mix and match complementary tones, textures, and shapes to create a look that is uniquely tailored to your atmosphere and menu.

Each dish you serve is carefully planned in the kitchen, and giving that same thoughtful attention to what it is being served on further highlights your creativity in the eyes of your customers.

Everything from fine dining to fast casual will look stunning on flat, simple plates that let the food be the star. Earth tones and soft colorways in dinnerware serve as a natural-looking backdrop that really makes the food stand out, especially recipes with bright, contrasting colors from fruits and vegetables. Finish off the look by pairing with unique flatware and visually-interesting glassware for an eclectic tabletop to convey an inviting sense of comfort and relaxation to your guests.

## FEATURING



PAGE 4

### Unity Collection

Durable melamine plates with a clean, modern look.



arc  
cardinal



PAGE 5

### Finca Dinnerware

Ceramic dinnerware with a semi-matte, hand dipped glaze.

ONEIDA® Hospitality Group

PAGE 6

### Timeless Glassware

Decorative diamonds create a memorable experience.

## Clean Lines

### Joyn Stoneware Dinnerware

Set a fashionable table with this trendy, eclectic collection by Arzberg Germany. Mix & match colors and shapes to create a unique, custom tabletop presentation.



- Listed in Ash, also available in Iron and Spark

<b>44120-640251-60970</b>	Gourmet Plate, 7¾"
<b>44120-640251-60974</b>	Gourmet Plate, 9¼"
<b>44120-640251-60976</b>	Gourmet Plate, 10¼"
<b>44120-640251-60712</b>	Bowl, 9¼ oz, 4¾"
<b>44120-640251-60713</b>	Bowl, 22 oz, 6¼"
<b>44120-640251-61220</b>	Sharing Bowl w/Handles, 37¼ oz, 7¾"
<b>44120-640251-65396</b>	Dip Bowl, 5 oz, 3¼"
<b>44120-640251-64934</b>	Espresso Cup, 3 oz
<b>44120-640251-65505</b>	Mug w/Handle, 13½ oz

More items available



### The Unity Collection Plates

The Unity Collection features a clean, straight-sided and stackable design with the durability of melamine. This dual-toned collection features colorways to approach both the coolest and warmest of decors.

- Available in Graphite (GE) or Mocha (MO)

		Pk
<b>UPR6</b>	6"	24 ea
<b>UPR9</b>	9"	12 ea
<b>UPR11</b>	11"	6 ea



## It's Natural

Ceramic and melamine dinnerware with the look of handcrafted pottery is a refreshing update to traditional white. The soft, nature-inspired colorways provide the same neutral backdrop to highlight and frame your food. Pair with contemporary flatware and creative glassware for an eclectic tabletop.



### MOD Dinnerware

This collection is inspired by a minimalist mood board where home gardening and organic food are part of everyday life. Every piece fits comfortably in cupped hands while the applied glaze gives them a soft, natural sheen.

- Stoneware
- Available in Smoky Basil (SB), Smoky Plum (SP) or Dusty White (DW)

		Pk
<b>MO2701020</b>	Plate, 7¾"	1 dz
<b>MO2701024</b>	Plate, 9¼"	1 dz
<b>MO2701027</b>	Plate, 10¾"	1 dz
<b>MO2702023</b>	Deep Plate, 33 oz, 9"	1 dz
<b>MO2702026</b>	Deep Plate, 52 oz, 10¼"	1 dz
<b>MO2752016</b>	Bowl, 21 oz, 6¼"	2 dz
<b>MO2752018</b>	Bowl, 32 oz, 7¼"	1 dz

More items available

**ONEIDA** Hospitality Group



### The Maker's Collection Finca Dinnerware

Finca is a multi-tonal print that mimics the worn textures of rustic interiors and architectural designs. Finished in a semi-matte, hand dipped glaze, enhancing the character of the collection and leaving original 'makers marks' on the reverse of each piece.

- Vitrified ceramic
- 5-year edge chip warranty (on select items)
- Listed in Limestone, also available in Sandstone

<b>FN502</b>	Narrow Rim Plate, 6"
<b>FN500</b>	Narrow Rim Plate, 9"
<b>FN494</b>	Organic Coupe Plate, 9"
<b>FN493</b>	Organic Coupe Plate, 10¾"
<b>FN497</b>	Organic Rectangular Plate, 13½" x 6¼"
<b>FN503</b>	Narrow Rim Bowl, 8¼"
<b>FN495</b>	Organic Coupe Bowl, 28 oz, 9¾"
<b>FN508</b>	Espresso Saucer, 4½"
<b>FN507</b>	Espresso Cup, 3½ oz



More items available

## Accent Pieces

### Timeless Glassware

Timeless features decorative diamonds that fan out before reaching the rim of the glass, creating a distinctive design that is sure to impress guests.

		Pk
<b>440176-012</b>	Martini, 7¾ oz	1 dz
<b>440276-012</b>	Red Wine, 11 oz	1 dz
<b>440356-012</b>	Champagne, 6 oz	1 dz
<b>51648-012</b>	Cocktail, 10¾ oz	1 dz
<b>52790-012</b>	Whiskey, 11½ oz	1 dz
<b>52820-012</b>	Long Drink, 9¾ oz	1 dz
<b>440366-006</b>	Cocktail, 5¼ oz	½ dz

More items available

**ONEIDA**® Hospitality Group



## Old Meets New

The new tabletop features vintage styles accented by pieces with modern sensibility and flair. This keeps your overall table design from looking like a retro theme, and instead lends a laid-back eclectic, feel that complements any atmosphere.

### Wyatt Flatware

Featuring Oneida's Relic™ finish, this forged pattern features an organic yet texturally-relaxed surface on the handle that is the perfect complement to any Artisan or casual dining experience.

- 18/0 stainless steel
- Heavy gauge
- Pk 1 dz

<b>B582STSF</b>	Teaspoon
<b>B582SDEF</b>	Dessert/Oval Bowl Soup Spoon
<b>B582FDEF</b>	Dessert/Salad Fork
<b>B582FDNF</b>	Dinner Fork
<b>B582KDTF</b>	Table Knife

More items available

**ONEIDA**® Hospitality Group

# VINTAGE & NOSTALGIA

## NEW TWISTS ON OLD FAVORITES

Espresso martinis, sun dried tomatoes, lunch box snack cakes: recipes, ingredients, and childhood treats from the not-so-distant past have been making their way onto menus in various forms. Just like with fashion, cultural tastes and food trends are cyclical, and the 80's and 90's are having their time in the spotlight. Retro desserts like Baked Alaska are getting a modern update by creative pastry chefs, and throwback cocktails are all the rage. Whether you recreate a gourmet version of a classic or put your own take on it (non-dairy options are a

huge hit right now), customers are delighted by the nostalgia of seeing and tasting a dish they associate with childhood or young adulthood.

Hand in hand with nostalgic menu trends is the draw towards vintage glassware and dinnerware. Even if you're serving up modern mixology and the finest of French cuisine, using pieces that look like they're from less modern times provides a delightful contrast to new tastes and techniques.

### FEATURING

---



PAGE 8

#### **Hobstar Glassware**

On-trend cut glass, ideal for upscale presentations.



PAGE 11

#### **Roca Glazed Dinnerware**

The look of artisanal stoneware with the durability of melamine.



PAGE 12

#### **Truss Flatware**

Size, strength and beauty.

Timeless Patterns

# On the Rocks



## Spirits Glassware

Premium glassware perfect for the rapidly growing craft and premium spirits market.



### Carats

- Retro-inspired look, heavy weight and larger capacity perfect for scotch or other spirits on-the-rocks

### Samba

- Hourglass design assists in evaporating the spirit, concentrating the aroma
- Large opening for adding ice

### Aromé

- Large surface area to evaporate the spirit, enhancing complex aromas
- Narrow top funnels aromas to the nose

### Spirits

- Rounded design with heavy base perfect for swirling "neat" drinks
- Glass narrows at the top to enhance aromas

		Pk
<b>925500</b>	Carats Double Old Fashioned, 12 oz	1 dz
<b>926774</b>	Carats Beverage, 14 oz	1 dz
<b>1038</b>	Samba Rocks, 8½ oz	1 dz
<b>3713SCP29</b>	Aromé Tasting, 9¾ oz	½ dz
<b>3502FCP21</b>	Spirits, 7 oz	1 dz
<b>926781</b>	Stirring, 25¼ oz	½ dz

## Speakeasy Glassware

Put a new twist on retro-inspired drinks, or start something entirely from scratch to create tomorrow's classics, with Speakeasy's faceted stem and avant-garde vessel design.

- Safedge® Rim Lifetime Guarantee
- Pk 1 dz

<b>601329</b>	Nick & Nora, 4¾ oz
<b>602104</b>	Gin & Tonic, 19½ oz
<b>603064</b>	Cocktail, 8¾ oz
<b>601602</b>	Coupe, 8¾ oz
<b>601404</b>	Martini, 6½ oz



## Hobstar Glassware

This on-trend vintage cut glass look was inspired by original 19th century design, and is ideal for upscale classic cocktail presentations—particularly whiskey-based drinks. The heavy feel increases the perceived value of the cocktail.

- Pk 1 dz

<b>5632</b>	Double Old Fashioned, 12 oz
<b>5633</b>	Cooler, 16 oz
<b>929799</b>	Coupe, 8½ oz







ARCOROC

Old-Fashioned Charm

### Broadway Glassware

Strikingly beautiful cut-glass effects add stylish sophistication with a vintage touch to this new collection.

• Pk 1 dz

- P8821** Gin Cocktail, 19½ oz
- P8795** Cocktail, 7 oz
- P8796** Coupe Cocktail, 8 oz

Faceted stems and sparkling cut-glass look show off your creations.



## Retro Modern

Classic glassware has never gone out of style, and these new patterns represent the best in cocktail trends through the years.

Whether you're serving up a well-known recipe, a twist on an old favorite, or a creation all your own, there's a reason these glasses have staying power. The fine details and versatile shapes will enhance whatever you're pouring.

### Sequence Nick & Nora Coupe Cocktail Glass

The perfect design progression, bringing a modern update to a classical shape with the essence of crafted crystal.

- Made with high-performance lead-free crystal material, Krysta®
- Pk 2 dz

**Q3702** 5¼ oz



C&S  
Chef & Sommelier  
FRANCE



## Old-Fashioned Charm

### Social Club Barware

This collection of vintage speakeasy shapes provides the perfect canvas for Instagram-worthy classic and modern craft cocktails. Made of Tritan copolyester, offering elegant design, peak clarity and the durability to protect against the disaster of shattered glass on or near the bar, patio, pool or rooftop.

- 100% BPA free
- Commercial dishwasher safe
- Pk 2 dz

<b>SW-2015-CL</b>	Nick & Nora, 4 oz
<b>SW-2016-CL</b>	Cocktail, 3½ oz
<b>SW-2013-CL</b>	Coupe Cocktail, 8 oz
<b>SW-2014-CL</b>	Martini/Cocktail, 6 oz
<b>SW-2017-CL</b>	Champagne, 5½ oz
<b>SW-2011-CL</b>	Stemless Champagne, 7 oz
<b>MB-20-CL</b>	Mixing Glass, 20 oz
<b>SW-2010-CL</b>	Wine, 14 oz
<b>SW-1446-1-CL</b>	Wine, 15 oz
<b>SW-1447-1-CL</b>	Balloon Wine, 20 oz
<b>SW-2012-CL</b>	Copa Gin/Margarita, 24½ oz



### Hadley Drinkware

Old-fashioned charm meets current fashion with the Hadley Collection. Featuring a cut crystal look, the Hadley line exudes pure elegance. Ideal for outdoor bars and lounges.

- Made with BPA-free Tritan copolyester
- Pk 6 ea

<b>BHH19</b>	Highball, 19 oz
<b>BHR14</b>	Double Old Fashioned, 14 oz



### Lilli Drinkware

Your grandmother's vintage glassware has achieved a new life. The Lilli Collection features a fresh embossed design that provides a nostalgic feel. These glasses have the delicate look of glass with the durability of plastic.

- Made with BPA-free Tritan copolyester
- Pk 6 ea

<b>BLH19</b>	Highball, 19 oz
<b>BLR14</b>	Double Old Fashioned, 14 oz





Plating Perfection

510527

500151

880529

### Steak Knives

Fine quality stainless steel blades resist rust, corrosion and discoloration.



- 510527** San Antonio, Wood Handle, 4¼" Blade
- 500151** Mountaintop, Delrin Handle, 4⅞" Blade
- 880529** Ybor City, Hollow Handle, 4¾" Blade

### Roca Glazed Dinnerware

This on-trend tabletop collection comes in two food-friendly plating colors and finishes. Featuring an artisanal handmade stoneware look with chef-approved clean plating surfaces, the unique look will dazzle any guest. NSF.

- 100% BPA free
- Break-resistant melamine
- Commercial dishwasher safe
- Available in Gray Gloss interior with Black Matte exterior (GRS/BKM), White Gloss interior with Gray Matte exterior (WS/GRM), Gray Matte interior with Black Matte exterior (GRM/BKM) or White Matte interior with Gray Matte exterior (WM/GRM)

		Pk
<b>RP-7</b>	Edge Dinner Plate, 7"	4 dz
<b>RP-9</b>	Edge Dinner Plate, 9"	4 dz
<b>RO-1612</b>	Oval Platter, 16" x 12"	6 dz
<b>RS-128</b>	Rectangular Plate, 12" x 8"	1 dz
<b>RR-5</b>	Shallow Side Dish, 4 oz	4 dz
<b>RB-7</b>	Low Street Bowl, 24 oz, 7"	1 dz
<b>RB-15</b>	Soup/Salad Street Bowl, 15 oz, 15"	1 dz
<b>RB-70</b>	Ramen Bowl, 32 oz, 7"	1 dz

More items available

## Bring the Party Outside

Outdoor dining doesn't mean sacrificing looks for durability, with replacement costs being in the way of a curated tabletop experience. Melamine dinnerware and plastic drinkware are available in the same on-trend styles as their more fragile counterparts, allowing you to replicate your indoor dining experience anywhere.

## Fine Dining

### Truss Flatware

The instant impression of massive size, strength and beauty of the ancient structures of Rome.

- 18/10 stainless steel
- Pk 1 dz

<b>TRU01</b>	Teaspoon
<b>TRU12</b>	Bouillon Spoon
<b>TRU07</b>	Dessert Spoon
<b>TRU04</b>	Iced Tea Spoon
<b>TRU29</b>	Demitasse Spoon
<b>TRU03</b>	Serving Spoon
<b>TRU05</b>	Dinner Fork
<b>TRU051</b>	Euro Fork
<b>TRU15</b>	Cocktail Fork
<b>TRU06</b>	Salad Fork
<b>TRU11</b>	Butter Knife
<b>TRU45</b>	Dinner Knife
<b>TRU451</b>	Euro Knife



# Inspired Dining

### Monbijou Dinnerware

Featuring ornate rims with rococo-style reliefs, suitable for classic banqueting and fine dining. Rim plates have strong edges.

- Bowls are stackable
- White



<b>11420-800001-30019</b>	Plate, 7½"
<b>11420-800001-30025</b>	Plate, 9½"
<b>11420-800001-30029</b>	Plate, 11¾"
<b>11420-800001-30119</b>	Deep Plate, 10½ oz, 7½"
<b>11420-800001-32624</b>	Oval Platter, 9½" x 7"
<b>11420-800001-32628</b>	Oval Platter, 11" x 8¼"
<b>11420-800001-30512</b>	Fruit Bowl, 4¾"
<b>11420-800001-33018</b>	Salad Bowl, 7"
<b>11420-800001-33150</b>	Pasta/Salad Bowl, 28¾ oz, 9"

More items available



# VISIBLE CLEANLINESS

SHOW US YOUR CLEAN

One lasting effect from the coronavirus pandemic is the increased awareness of sanitation and cleanliness in public spaces. For many customers choosing to dine out, a restaurant simply passing their health inspection is not enough. While the commitment to food safety procedures and general sanitation will always be forefront to operators, it is important to be aware that patrons, now more than ever, want to actually see what is being done to keep an establishment safe.

If you have an open kitchen, make sure it is organized in a thoughtful and tidy way. Make sure any cleaning supplies you use in the front or back of house are not overly worn out or faded, as this may make customers think they are not sanitary. Switching to using touchless, electronically-operating faucets not only helps reduce the risk of germ transmission, but the lack of handles also gives you one less thing to worry about sanitizing.

## FEATURING

---

**DEXTER**  
THE EDGE SINCE 1919

PAGE 15

### **SANI SAFE® Cutlery**

An impervious blade-to-handle seal provides sanitary performance.

**T&S**  
RELIABILITY BUILT IN™

PAGE 16

### **ChekPoint™ Sensor Glass/Bottle Fillers**

Hands-free operation to help reduce the spread of germs.

**CARLISLE**  
FOODSERVICE PRODUCTS

PAGE 17

### **Mopping Systems**

Divided buckets so you're mopping with clean water after each wring.

## Antimicrobial Protection



### Bellwether™ Flatware

Bellwether's antimicrobial protection creates an inhospitable environment for microorganisms by continually disrupting and preventing uncontrolled growth in between washings.

- 18/10 stainless steel
- Pk 1 dz



<b>BLW01</b>	Teaspoon	<b>BLW05</b>	Dinner Fork
<b>BLW07</b>	Dessert Spoon	<b>BLW06</b>	Salad Fork
<b>BLW012</b>	Bouillon Spoon	<b>BLW45</b>	Dinner Knife



## Hidden Protection

While products with built-in antimicrobial protection may not be as easily identified by your guests, you can still have peace of mind knowing they provide an additional level of protection. Easy content idea: You can post about using items with built-in antimicrobial protection to your social media accounts. Customers will appreciate your extra commitment to sanitation.

### Booster Seats

Built-in antimicrobial protection eliminates the growth of odor-causing bacteria. The polypropylene construction is sturdy and lightweight with a weight capacity of 50 lb. ASTM-certified straps effectively secure the child around the waist in a harness configuration.

- Integrated cup holder
- Stackable

<b>911401</b>	Brown
<b>911403</b>	Black
<b>911405</b>	Red
<b>911414</b>	Blue





Food Safety

### 24 Hour Digital Timer

Continuous ring with no automatic shut off helps ensure that cooking food is not forgotten once it is ready.

- Operates on three AA batteries (included)
- Four volume settings

**5282798** Time Range: 23:59:59

**TAYLOR**

### Waterproof Digital Thermocouple Thermometer

The 1.5mm FDA-compliant stem is perfect for thin foods, with a response time of less than 6 seconds to stable. Safe-T-Guard™ case incorporates an EPA registered product that inhibits the growth of bacteria on the product case. Waterproof. NSF.

- Large 180° rotating display with blue backlight
- 270° pivoting probe
- Complies with HACCP recalibration requirement

**9868FDA** -40° to 572°F/-40° to 300°C

### SANI-SAFE® Cutlery

A textured, slip-resistant, easy-to-clean polypropylene handle withstands both high and low temperatures. An impervious blade-to-handle seal provides the utmost in sanitary performance. Blades are manufactured from proprietary DEXSTEEL® stain free, high-carbon steel, are individually ground and honed, and excel in commercial use. NSF.

- Made in USA

- 18213** Sandwich Spreader, Scalloped, 3½"
- 15303** Cook's Style Paring, 3¼"
- 13303** Utility, Scalloped, 6"
- 13483** Utility, Scalloped, 8"
- 12443** Cook's, 8"
- 12433** Cook's, 10"
- 04133** Butcher, 8"
- 18173** Bread, Scalloped, 10"
- 13583** Offset Slicer, Scalloped, 9"
- 13463** Roast Slicer, Scalloped, 12"
- 08253** Cleaver, 7"
- 18043\*** Pizza Cutter, 2¾" dia Blade
- 18023\*** Pizza Cutter, 4" dia Blade

\* Not NSF



Impervious blade-to-handle seal provides sanitary performance.

## Hands-Free Operation



### ChekPoint™ Gooseneck Electronic Faucets

It's easy to see how quickly germs can spread when multiple employees and customers touch the same faucet handle. With a hands-free faucet, the risk of contamination is greatly reduced and helps protect everyone's health.

- Polished chrome plated brass body
- Wall mount gooseneck spout
- Vandal-resistant aerator

<b>EC-3100</b>	Single Hole Deck Mount
<b>EC-3101</b>	Single Hole Wall Mount
<b>EC-3105</b>	4" Center Wall Mount



# Touchless Clean

### ChekPoint™ Sensor Glass/Bottle Fillers

Help prevent the spread of germs and the risk of cross-contamination with hands-free filling. The polished chrome-plated brass body features anti-microbial coating.

- Single hole deck mount
- 1.5 gpm
- 18" flexible stainless steel supply hose

<b>EC-1210-08</b>	8" high
<b>EC-1210-10</b>	10" high
<b>EC-1210-12</b>	12" high



## Hands Off

In addition to helping reduce the risk of germ transmission, touchless faucets and water dispensers have added benefits that will save you money.

- 1) Reduce water consumption: No more taps running while you follow proper handwashing procedures
- 2) Reduced labor: No more faucet handles to worry about cleaning and sanitizing each day





## Camshelving® Starter Shelving Units

Camshelving® is designed to withstand all storage applications and temperatures—impervious to moisture, chemicals, salt, food acids and humidity. Vented shelves allow for maximum airflow around perishable products and can be individually adjusted. Antimicrobial protection is permanently molded into shelf plates and they easily wipe clean or fit through a commercial dishwasher. Components have been thoughtfully designed to maximize storage space, even in space-restricted areas. Lifetime warranty against rust and corrosion for shelf plates, posts and traverses. Each starter unit includes vented shelves, posts, and post connectors.

### Camshelving® Premium Series

- Holds up to 2000 lb per unit
- Ideal for freezers, coolers, walk-ins, or dry storage
- Speckled Gray

### Camshelving® Elements Series

- Holds up to 2000 lb per unit
- Ideal storage for walk-ins, freezers, or dry storage
- Brushed Graphite

### Camshelving® Basics Plus Series

- Holds up to 1800 lb per unit
- Ideal storage for walk-ins, freezers, or dry storage
- Brushed Graphite

### Stationary

CPU214872V4480	Premium Series, 48" w x 21" d x 72" h
CPU244872V4480	Premium Series, 48" w x 24" d x 72" h
ESU244872V4580	Elements Series, 48" w x 24" d x 72" h
ESU246072V4580	Elements Series, 60" w x 24" d x 72" h
CBU244872V4580	Basics Plus Series, 48" w x 24" d x 72" h
CBU246072V4580	Basics Plus Series, 60" w x 24" d x 72" h

### Mobile

CPMU244867V4480	Premium Series, 48" w x 24" d x 67" h
CPMU244875V4480	Premium Series, 48" w x 24" d x 75" h
EMU244878V4580	Elements Series, 48" w x 24" d x 78" h
EMU246070V4580	Elements Series, 60" w x 24" d x 70" h

[More items available](#)

**CAMBRO**  
TRUSTED FOR GENERATIONS™



Janitorial & Storage

## Mop Bucket & Wringer Combos

Mop your floors with fresh water after each wring with this new divided mop bucket. The dirty water bucket nests under the wringer, separating the soiled water from your cleaning solution. This will help you reduce costs and increase efficiency while vastly improving the sanitation of your floors.

- Sturdy design for up to 200k wringer cycles
- Buckets fit competitors' wringers
- 35 qt bucket capacity

**CARLISLE**  
FOODSERVICE PRODUCTS

- 96904** w/Side-Press Wringer and Soiled Water Insert Bucket, Yellow (04), Red (05), Brown (01), Green (09), Blue (14) or Black (03)
- 86904** w/Side-Press Wringer, Yellow (04), Red (05), Brown (01), Green (09), Blue (14) or Black (03)
- 4690404** w/Down-Press Wringer, Yellow



[More items available](#)

## Loop-End Mops

These looped-end mop heads are built to last, offering reduced fraying, linting and laundering capability. Superior performance that lasts up 8x longer than cut-end mops.

**CARLISLE**  
FOODSERVICE PRODUCTS

- 4-ply synthetic/cotton blend
- Wide band

- 369418B00** Flo-Pac® White w/Green Band
- 369418B05** Medium, Red w/Green Band
- 369448B14** Flo-Pac® Medium, Blue w/Green Band
- 369478B09** Flo-Pac® Medium, Green w/Green Band
- 369424B00** Flo-Pac® Large, Natural w/Red Band
- 369424B05** Large, Green w/Red Band
- 369454B14** Flo-Pac® Large, Blue w/Red Band
- 369484B09** Flo-Pac® Large, Green w/Red Band



# TIKTOK

## THE NEWEST TREND IN SOCIAL MEDIA MARKETING

With well over 70 million users in the United States alone, TikTok is the newest social media app rising in popularity. Young and old alike watch to be entertained by the creativity of others, connect with like-minded communities, explore topics that interest them, and discover new experiences and places.

Restaurants and chefs are using the platform to give viewers a behind-the-scenes look at their craft. Everything from showing how their signature menu items are made to demonstrating basic cooking techniques makes for mouth-watering content with the potential

to attract new customers. It's also a great way to tell the story or history of your brand—anything to show what makes your place special and worth a visit.

### The potential power of views, by the numbers:

- 36% of TikTok users have visited or ordered food from a restaurant after seeing a TikTok video about the restaurant
- 55% of users visited a restaurant from TikTok simply because the food looked appetizing, and 51% visited because of a unique menu item
- 20% of users have visited a restaurant in a different city based on videos posted on TikTok, and 52% report that while they haven't yet, they are likely to do so in the future
- 45% of users said they'd be willing to travel out-of-state for a restaurant they saw on the platform

*Source: MGH, August 2021, (SURVEY) How TikTok Influences Restaurant Dining Behavior*

### FEATURING



**TAYLOR**

PAGE 19

#### Digital Coffee Scale

Artisinal coffee requires precision for the best pour.



PAGE 20

#### Refrigerated Beverage Dispensers

Drive impulse purchases with colorful drinks.



PAGE 21

#### Meat Tenderizer/Strip Cutter

Enhance taste and tenderness and strip-cut to perfection.

## Trade Secrets

As foodservice professionals, we sometimes forget the novelty of working with specialized equipment. Giving customers a behind-the-scenes look at how you make certain menu items and at the equipment you use daily may seem like nothing. But to someone who doesn't know how huge a commercial mixer really is in person, or all the steps it takes to make that perfect latte, getting an insider's glimpse into your trade can make them more motivated to come in and experience what you sell in person.

## Unique Experiences

### Floor Mixer

A power-efficient, variable speed transmission enables the operator to change speeds without having to first stop the mixer. This advanced technology utilizes torque-sensing pulleys to extract a greater torque-to-horsepower ratio with fewer parts. NSF, cETLus.

- Includes a two-piece, stainless steel removable Swing Ring Safety Guard, a heavy-drawn stainless steel bowl, batter beater, wire whip, dough hook, #12 PTO hub, power bowl lift and bowl scraper
- 2 year parts & labor warranty

SRM60+ 60 qt Capacity



**TAYLOR**

### Bi-Therm® Superior Grade Thermometer

Integrated clip easily attaches to a frothing cup or pitcher to monitor the temperature of steamed milk and other hot beverages. NSF.

- Stainless steel
- 1¾" dia dial
- 9" stem with adjustable vessel clip

8215N 0° to 220°F/-10° to 100°C



### Frothing Thermometer

Featuring an easy-to-read zoned dial for optimum frothing temperatures.

- Sealed dial design prevents fogging
- 6" stem with adjustable vessel clip

5997E 120° to 180°F/50° to 80°C



**TAYLOR**

### Digital Coffee Scale

In addition to weighing items, this scale also features a timer with a range of 9 minutes, 59 seconds.

- 4.1" square platform
- Auto off feature
- Micro USB cord adapter included

5282765 70.5 oz x 0.004 oz/2 kg x 0.1 g



### Refrigerated Beverage Dispensers

From tea to lemonade to juice, Vollrath® refrigerated beverage dispensers quench the market's thirst for quality, versatility, dependability and efficiency. These countertop dispensers can accommodate any level of operation and are aesthetically pleasing. NSF, ETL Safety.

- 12-liter bowls, available in 1, 2, 3 or 4-bowl configurations
- Each bowl has its own thermostat to help keep product at a consistent temperature and quality
- Unibody, stainless steel cabinet

<b>VBBD1-37-S</b>	1 Bowl w/Stirring Paddle
<b>VBBD2-37-S</b>	2 Bowls w/Stirring Paddle
<b>VBBD3-37-S</b>	3 Bowls w/Stirring Paddle
<b>VBBD4-37-S</b>	4 Bowls w/Stirring Paddle
<b>VBBD1-37-F</b>	1 Bowl w/Fountain Spray
<b>VBBD2-37-F</b>	2 Bowls w/Fountain Spray
<b>VBBD3-37-F</b>	3 Bowls w/Fountain Spray
<b>VBBD4-37-F</b>	4 Bowls w/Fountain Spray

More items available



(2) 8-Liter Bowls  
w/Agitator Shown



### Digital Keg Scale

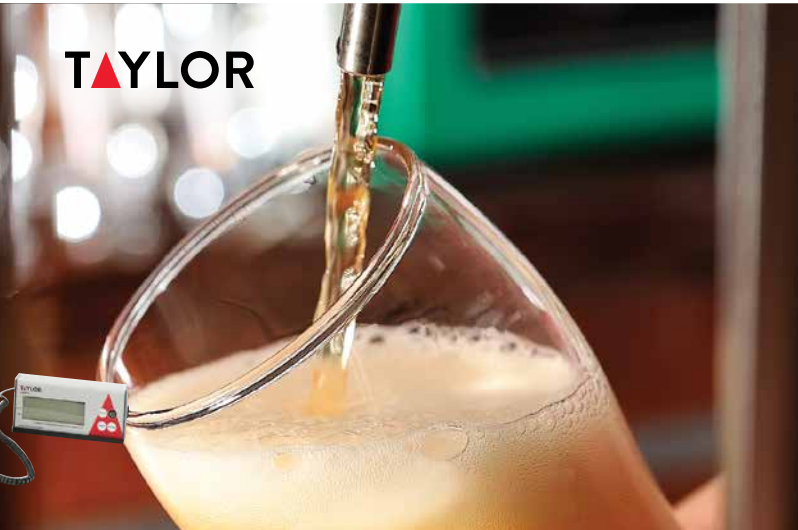
Ensure accurate inventory of your draft beer with this heavy-duty digital scale. Features a low platform to tip kegs on and off the scale easily.

- 16" dia stainless steel platform with 6' coiled cord
- IPX5 waterproof rating
- Auto-off feature
- Operates on AC adaptor (included) or (4) AA batteries (not included)

**5265117** 440 lb x 5 oz/440 lb x 0.2 lb/  
200 kg x 0.1 kg



**TAYLOR**





### SOFGRIP® Boning Knives

The standard in non-slip and comfortable design for demanding kitchen environments. A soft rubber grip reduces stresses that may cause fatigue and common wrist injuries like carpal tunnel syndrome. Blades are manufactured from proprietary DEXSTEEL® stain-free, high-carbon steel and are individually ground and honed. NSF.

- Protective finger guard
- 6" blade
- Made in USA

<b>SG131-6PCP</b>	Curved, Narrow
<b>SG136PCP</b>	Wide
<b>SG136F-PCP</b>	Flexible
<b>SG136N-PCP</b>	Narrow



### V-LO® Boning Knives

A patented, state-of-the-art handle design offers both comfort and control. Soft-to-the-touch, and with the firmness you need, plus a modern, attractive look. Blades are manufactured from proprietary DEXSTEEL® stain-free, high-carbon steel, and are individually ground and honed. NSF.

- Protective finger guard
- 6" blade
- Made in USA

<b>V136F-PCP</b>	Flexible
<b>V136N-PCP</b>	Narrow



## Star of the Show

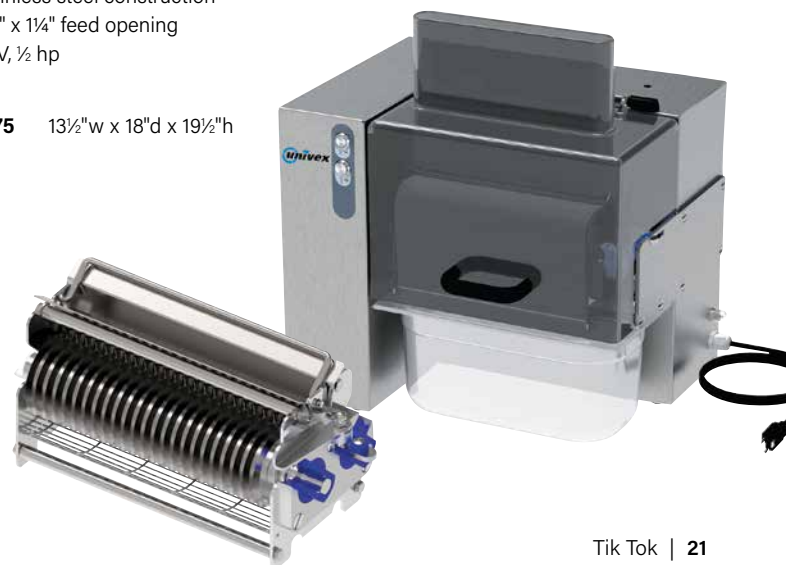
A great content topic for your video social media posts is food prep. Show off your knife skills, educate viewers on the best techniques, and be the star of your own show with mouth-watering footage of dishes as they're prepared. Customers will be impressed by the technique that goes into creating a delicious final product, and will want to stop by and try it for themselves. After all—we eat with our eyes first!

### Meat Tenderizer/Strip Cutter

Designed to enhance the texture and tenderness of meat and/or strip-cut to perfection. Perfect for making fajitas. ETL Sanitation, cETLus.

- Stainless steel construction
- 9¾" x 1¼" feed opening
- 115V, ½ hp

**MT975** 13½"w x 18"d x 19½"h



# CATERING REIMAGINED

## A FOCUS ON SANITATION AND ORGANIZATION

Now that larger, in-person events are starting to become commonplace again, operators are rethinking how they are serving food. Hand-in-hand with the Visible Cleanliness trend is an enhanced consumer awareness about the potential health risks for self-serve buffet setups. That doesn't mean buffets and drop-off catering can't or shouldn't happen, just that they may need an extra level of attention to detail.

For off-site events, a portable handwashing station that doesn't require access to plumbing

is an important addition. Even if there are indoor sinks available, setting up a place for guests to wash their hands before approaching a serving line can help reduce the potential for germ transfer.

Portable induction ranges allow you to set up action stations with cook-to-order food instead of only having traditional self-serve stations. Keeping any grab-and-go areas tidy and organized in nice, clean-looking displays will give customers additional peace of mind.

### FEATURING

---

**CAL·MIL**

PAGE 25

#### **Hudson Dinnerware**

A modern collection with beautifully-crafted raised rims.

**VOLLRATH®**

PAGE 26

#### **4-Series Induction Ranges**

It's like cooking with gas, only better.

**CAMBRO**  
TRUSTED FOR GENERATIONS™

PAGE 27

#### **Portable Handwashing Stations**

Bring sanitation and hygiene to any location.



Three units shown with optional add-ons and custom shelving

### Folding Display Kiosk

Perfect for back bar displays, breakfast buffets and Grab 'n Go service. Create your custom display by adding optional features (sold separately): full-size, half-size, and narrow add-on shelves; linear and corner connector shelves to use multiple units at once; leather and wood shelf toppers; or a vinyl magnetic back wall add-on.

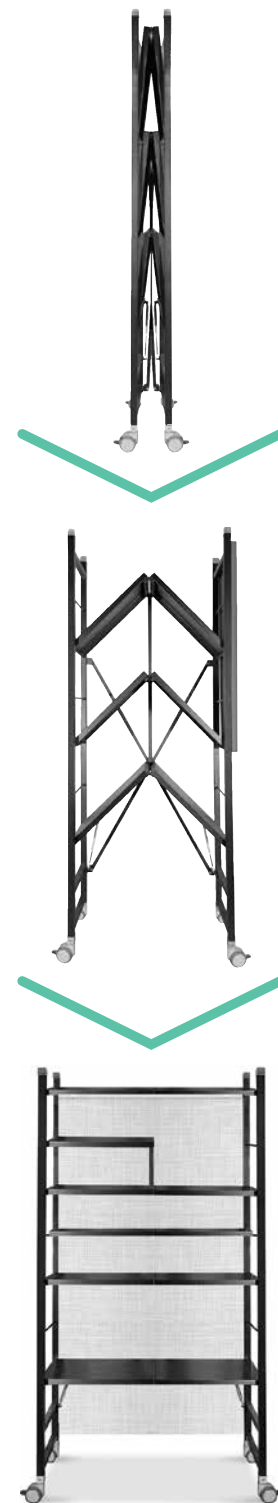
- Easily collapses to only 5"d with one hand, no hardware required
- Black powder coated aluminum frame with 5 shelves
- Available in a variety of Xylo finishes

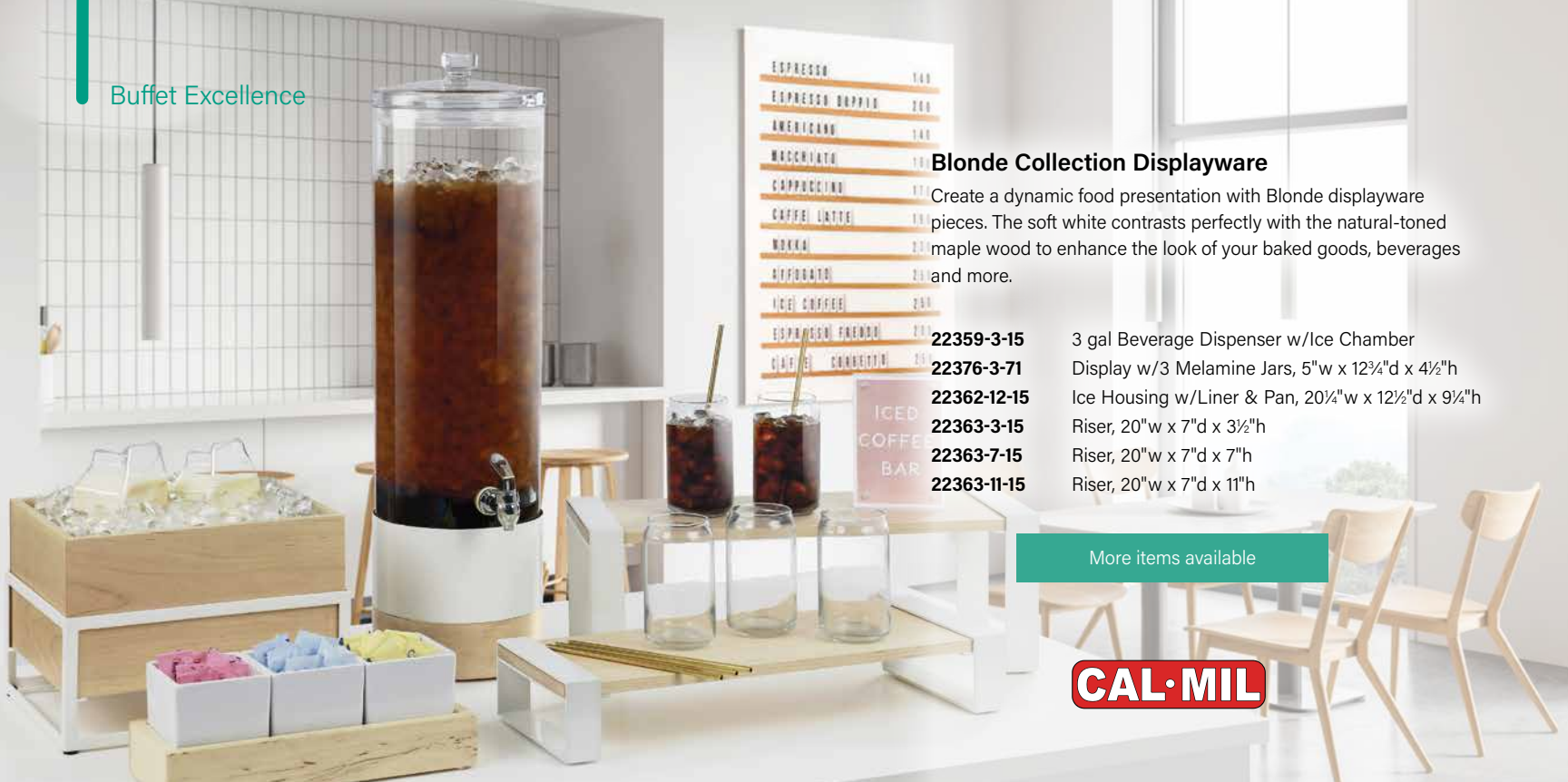
**Z1000** Kiosk Display Frame w/5 Black Shelves, 36"w x 16¾"d x 73"h



**EASTERN**  
TABLETOP

Multi-functional,  
ultra-lightweight, and  
customizable.





### Blonde Collection Displayware

Create a dynamic food presentation with Blonde displayware pieces. The soft white contrasts perfectly with the natural-toned maple wood to enhance the look of your baked goods, beverages and more.

- 22359-3-15** 3 gal Beverage Dispenser w/Ice Chamber
- 22376-3-71** Display w/3 Melamine Jars, 5" w x 12 $\frac{3}{4}$ " d x 4 $\frac{1}{2}$ " h
- 22362-12-15** Ice Housing w/Liner & Pan, 20 $\frac{1}{4}$ " w x 12 $\frac{1}{2}$ " d x 9 $\frac{1}{4}$ " h
- 22363-3-15** Riser, 20" w x 7" d x 3 $\frac{1}{2}$ " h
- 22363-7-15** Riser, 20" w x 7" d x 7" h
- 22363-11-15** Riser, 20" w x 7" d x 11" h

More items available



## It's the Little Things

From catered lunches to outdoor events, the small, thoughtful touches make the biggest differences. Individually-packaged portions with covers that protect food from airborne contaminants give customers added peace of mind.

Patio heaters create a more comfortable environment for eating and socializing outdoors, even when the temperature drops or on a dreary day.

### Melamine Naturals Bento Boxes & Lids

Meal delivery gets a beautiful makeover. Sleek and stylish with a hint of marble, each box is durable and stackable. Matching lids (sold separately) can also be used as trays.

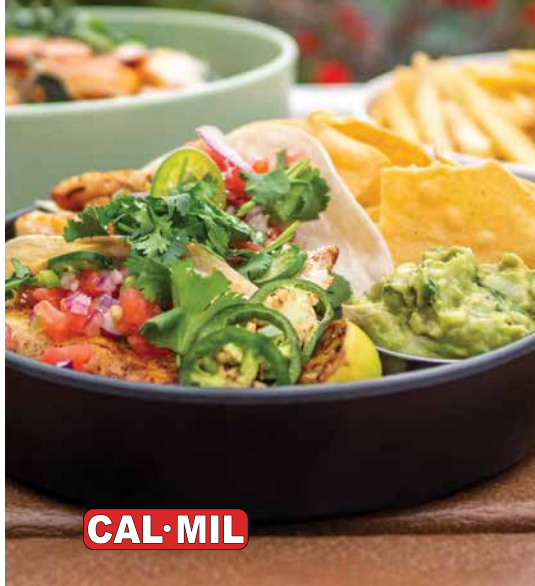


- BB1WH** 1-Comp. Bento Box, White, 10 $\frac{7}{8}$ " l x 8 $\frac{1}{4}$ " w x 2 $\frac{3}{4}$ " h
- BB5WH** 5-Comp. Bento Box, White, 10 $\frac{7}{8}$ " l x 8 $\frac{1}{4}$ " w x 2" h
- BBLWH** Lid, White, 10 $\frac{7}{8}$ " l x 8 $\frac{1}{4}$ " w
- BBLWM** Lid, White Marble, 10 $\frac{7}{8}$ " l x 8 $\frac{1}{4}$ " w





# Perfect for Poolside



**CAL·MIL**

## Hudson Dinnerware

Boasting a beautifully crafted raised rim, this modern collection is the perfect dinnerware set to showcase culinary creations! Durable polycarbonate covers are perfect for poolside and outside dining.

- Premium melamine construction
- Available in White (-15), Stoneware (-89), Blush (-108), Terra Cotta (-109), Black (-13) and Matcha (-107)

<b>22017-8</b>	Raised Rim Plate, 8"
<b>22017-10</b>	Raised Rim Plate, 10"
<b>22017-12</b>	Raised Rim Plate, 12"
<b>22018</b>	Oval Platter, 14" x 11¼"d
<b>22013-10</b>	Raised Rim Bowl, 10"
<b>22346-8-12</b>	Clear Cover For 22017-8
<b>22346-10-12</b>	Clear Cover For 22017-10
<b>22346-12-12</b>	Clear Cover For 22017-12

[More items available](#)



**winholt**  
equipment



# Secure Storage

## Propane Storage Tank Cage

Safely and securely stores propane tanks. Heavy-duty steel construction with all-weather, orange powder coating.

- 2 shelves hold 12 total 12½"w x 17½"h tanks
- Safeguards to prevent tampering and theft

**SC-1740-5IH-2S** 45"w x 30"d x 52"h

With outdoor dining at an all time high, safely and securely store tanks for patio heaters and BBQs.

Small Footprints



#### 4-Series Induction Ranges

It's like cooking with gas, only better. An expanded magnetic field and faster pan recognition allows you to lift and tilt pan to baste or sauté just like gas. Compared to gas, these ranges have more precision, control and a faster response due to the patented circuitry and temperature control probe. Classified UL EPH, cULus, FCC.

- Stainless steel case with glass cooking surface
- Touchscreen control panel
- 90% efficiency rating means more heat is transferred to the pan and less to the kitchen
- 80° to 450°F temperature range
- 2-year warranty

##### Medium Power

**MPI4-1440** 1440W (Recommended for Canada)

**MPI4-1800** 1800W

##### Medium Power w/Temperature Control Probe

**MPI4-1440S** 1440W (Recommended for Canada)

**MPI4-1800S** 1800W

##### High Power w/Temperature Control Probe

**HPI4-2600** 2600W

**HPI4-3000** 3000W

**HPI4-3800** 3800W



#### Enclosed Mobile Cabinet

Enclosed design helps keep airborne contaminants away from food, keeping it safe and sanitary, and retards dehydration. Made in the USA. NSF.

- Sanitary and rustproof
- All welded reinforced aluminum construction (non-insulated)
- Holds (40) 18" x 26" trays
- 1/2" spacing between runners

**EC1840-C-MFG** 21"w x 27"d x 68"h



## Mobile Clean

Do you serve barbecue, messy-delicious overstuffed sandwiches, or any other cuisine where eating with your hands is the norm?

If so, adding a portable handwashing station outdoors will pleasantly surprise your guests, allowing them to easily wash up before and after eating without having to venture inside. This will also help reduce indoor traffic and noise, as well as cut down on the amount of needed facility maintenance.



## Portable Handwashing Stations

Bring sanitation and hygiene to any location, with no hookups needed.

### Hands-Free Mobile Handwashing Station

- Includes a standard size tri-fold paper towel dispenser, two automatic soap dispensers, and 20½ gal wastewater tank
- Foot pedal operated

### CamKiosk® Hand Sink Cart

- Includes double sink, 10-gal freshwater and 14-gal wastewater bins, hand soap dispenser, and paper towel roll holder
- Foot pedal operated

### Camtainer® 3 in 1 Handwash Station

- Includes the 500LCD 5-gal Camtainer, riser, paper towel roll holder and soap dispenser, and easy serve dispenser

### Handwash Starter Station

- Includes a 6-gal pail with bail, 6-gal dispenser with spigot, and 2 "HAND WASHING ONLY" stickers

<b>MHWS18615</b>	Hands-Free Mobile Handwashing Station
<b>KSC402CFP191</b>	CamKiosk® Hand Sink Cart
<b>HWS31110</b>	Camtainer® 3 in 1 Handwash Station
<b>HWSS148</b>	Handwash Starter Station

## Off-Premises & Outdoors

### Mobile Hand Sink

This unit is an efficient solution for areas with restricted or limited availability to plumbing, while ensuring appropriate levels of hygiene. Lifetime warranty against corrosion. Made in the USA. NSF.

- Constructed of 300 series stainless steel
- Includes 5 gallon clean water storage, 6 gallon waste water storage and faucet

### STCT-BHD2436-PUMP-WH

26½" w x 24" d x 44" h



### Portable Handwashing Stations

Designed to provide handwashing capabilities in areas not normally equipped for it, these portable handwashing stations are safe for both indoor and outdoor use.

- Durable stainless steel construction
- Easy access to plumbing



**TPS1010-B0520V5** Foot-Pump Activated Faucet, (2) 6½ gal Tanks for Fresh & Waste Water, Casters

**TPS1020-B0205V5** Manual Faucet, ¾" Fresh Water Hose Connection, 5 gal Waste Tank

**TPS1020-E3130V5** Electronic Sensor Faucet, ¾" Fresh Water Hose Connection, 5 gal Waste Tank



# TAKE-OUT & DELIVERY

KEEP UP WITH THE DEMAND

There is no doubt that take-out and delivery are lasting trends, and luckily there are innovative products that can help support your carryout program. Reusable, eco-friendly containers give a better perceived value to customers than disposables, and may also be more cost effective, without sacrificing food quality. Countertop cooking and holding equipment can allow you to set up separate stations for to-go orders, rather than slowing down your main line during times where both carryout and dine-in orders are high.

Setting up dedicated areas and equipment for packaging and holding carryout orders is also a great way to help ensure customer satisfaction: Staying organized means fewer errors and confusion. Establishing a clearly marked area where customers and delivery drivers pick up orders will also free up your front of house staff to better focus on their dine-in customers.

FEATURING



ARCOROC

PAGE 30

## So Urban Collection

Reusable glass containers:  
functional and practical.



PAGE 32

## Mobile Order Pick Up Stations

Eliminate congestion around  
counter spaces.



PAGE 33

## Combination Heater/ Proofer Cabinets

Keep food warm while it's  
waiting for pick up.



### Eco-Takeouts® Reusable Food Containers

These environmentally-friendly, leak-resistant food containers are made of sturdy, BPA-free recyclable polypropylene. A sustainable alternative to disposable takeout containers. NSF.

- Commercial dishwasher safe
- Microwave safe for re-heating
- Available in Jade (-JA) or Clear (-CL); some items also available in Black (-BK)
- Pk 1 dz



- EC-8-1** 1-Compartment, 5" x 5" x 3¼"
- EC-11-1** 1-Compartment, 9" x 6½" x 2¾"
- EC-10-1** 1-Compartment, 9" x 9" x 3½"
- EC-15-2** 2-Compartment, 10" x 8" x 3"
- EC-09-1** 3-Compartment, 9" x 9" x 3½"
- EC-116-1-JA** Double Wall Cup w/Lid, 16 oz, Jade
- EC-21** Side Dish w/Hinged Snap Lid, 12 oz, 4¼"
- EC-23-1** Soup w/Screw-On Lid, 12 oz, 4¾"
- EC-25-1** Single Pizza Slice, 10½" x 8¼"
- EC-07-1** Soup, 12 oz, 4¼" x 2¾"

More items available



# Eco-Solutions

### Eco-Takeouts® Eco Drop Bins

The Eco Drop Bin offers you a comprehensive solution for returning used Eco-Takeouts® containers.

- Holds up to (25) 9" x 9" containers
- Black powder-coated steel
- Fits a 40 gallon square trash can (sold separately)



**BIN-1-BK** 29"w x 27"d x 40"h

**BIN-1-BK-NS** 29"w x 27"d x 40"h, No Stickers

### So Urban Collection

Support your sustainability initiative with these reusable glass containers. With its perfect balance between design and functionality, So Urban gives a better perceived value to the customer compared to plastic.

- Great for fast casual chains and food delivery
- LDPE lids are safe and reusable
- Microwave and dishwasher safe
- Pk 2 dz

#### Bowls with Lids

**Q1758** 8¼ oz, 4¼"

**Q1757** 12½ oz, 4¼"

**Q1752** 19½ oz, 5½"

**Q0620** 27 oz, 5½"

#### Bowls

**Q1762** 8¼ oz, 4¼"

**Q1753** 12¼ oz, 4¼"

**Q1750** 19½ oz, 5½"

**Q1745** 27 oz, 5½"

#### Lids

**Q3007** 4¼"

**Q3006** 5½"



arc  
cardinal

**ARCOROC**



### Cam GoBox® Insulated Pan Carriers

Ultra lightweight transporters that offer superior temperature retention and excellent durability at a budget-friendly price. Great for multiple stops, large events or holding food for pickup. Cam GoBox® protects food quality & safety while lightening the load for employees. NSF.

- Keeps food at safe temperatures for 4 hours or more
- Lightweight and incredibly strong

## Eco-Friendly Choices

With an increasing awareness of the environmental concerns over single-use plastics, and with some states banning foam containers, operators need more sustainable options for carryout containers. Reusable plastic and glass containers are a great alternative to traditional disposables.

Customers can return containers to be washed and reused in exchange for a small discount on their next meal.

#### Front Loaders

**EPP300**

Holds 3 Full Size 4"d Pans, 17.3"w x 25.2"l x 18.7"h

**EPP400**

Holds 4 Full Size 4"d Pans, 17.3"w x 25.2"l x 24.6"h

#### Top Loaders

**EPPMBWSTSW110**

Holds 13" x 13" Milk Crate

**EPP260SW110**

Holds 1 Half Size 6"d Pan, 13"w x 15.4"l x 10"h

**EPP280SW110**

Holds 1 Half Size 8"d Pan, 13"w x 15.4"l x 12.4"h

**EPP280WSTSW110**

Holds 1 Half Size 8"d Pan, w/Web Strap, 13"w x 15.4"l x 12.4"h

**EPP160SW110**

Holds 1 Full Size 6"d Pan, 15.7"w x 23.6"l x 10"h

**EPP180SW110**

Holds 1 Full Size 8"d Pan, 15.7"w x 23.6"l x 12.4"h

**EPP180XLTSW110**

Holds 1 Full Size 8"d Pan, 17"w x 24"l x 15.4"h

**EPP180FLSW**

Holds 1 Full Size 8"d Pan, with Flip Lid, 15.7"w x 23.6"l x 12.4"h

Camdolly®, Red

**CDC300358**

Fits EPP160, EPP180, EPP300, EPP400, EPP180LH, UPC300 & 18" x 26" Food Boxes

**CDC400358**

Fits EPP180XLT, UPC400, EPP160, EPP180, EPP300, EPP400, UPC300 & 18" x 26" Dough Boxes

#### Beverage Holder

**EPPBEVH2110**

Holds 6 Beverages

#### Plastic ID Labels

**EPPID5**

Fits All Cam GoBox® Sizes

## Countertop Ventless Hood System

Create a second cooking line or up-front food preparation for curbside or pantry stations. Removes smoke, grease-laden air, moisture and odors, improving the environment for kitchen staff and patrons. Perfect for panini grills, crepe makers, waffle bakers, induction cookers and griddles.

### Ventilation System

- Stainless steel construction
- Filters removable from the front of the equipment
- Ventless hood allows you to cook anywhere with access to standard 120V power
- Optional ANSUL pre-piping
- cETLus, ETL Sanitation

### Induction Cookers

- Stainless steel casing
- Highly energy-efficient and versatile, with superior airflow and cooling fans for all day use
- Capacitive touch controls for precision, durability and hygiene
- cETLus, ETL Sanitation

### Ventilation System

**SAV-G PALI** 26" x 29 $\frac{3}{4}$ " x 31"

### Induction Cookers - 2 Zone

**GL2-3500** 3500W  
**GL2-5000** 5000W  
**GL2-6000** 6000W  
**GL2-7000** 7000W

**EQUIPEX**



*Shown with induction cookers, sold separately*

Cooking & Holding



Perfect for back-of-the-house  
or up-front food preparation.

## Countertop Warming Displays

Showcase your menu selections in these attractive and versatile countertop displays. cULus, UL EPH.

- Fully panoramic, LED-illuminated display
- Precise control of temperature with electronic thermostat
- Ventilated fire stone heating system for fast recovery
- Stainless steel interior
- 30 $\frac{1}{2}$ "l x 19 $\frac{3}{8}$ "d
- 120V

**EQUIPEX**

### Self Service - Black Enamel Exterior

**WD-780B-2/1-SS-SL** 2 Slanted Shelves, Holds 4 Half Size or 2 Full Size Sheet Pans, 18 $\frac{3}{4}$ "h

### Operator Service - Black or Stainless Steel Exterior

**WD-780-2/1** 2 Shelves, Holds 4 Half Size or 2 Full Size Sheet Pans, 18 $\frac{3}{4}$ "h

**WD-780-3/1** 3 Shelves, Holds 6 Half Size or 3 Full Size Sheet Pans, 25 $\frac{1}{4}$ "h



*Self-Service Warming Display shown*



## Order Efficiency



### Super Erecta® Hot Shelving & Metro2Go Hot Stations

Extend holding time with your ideal configuration of heated shelving, wire shelving, and storage areas. NSF, cULus.

- Stainless steel shelves with aluminum inner core for consistent, radiant heat
- Adjustable thermostat, 200°F maximum surface temperature

#### Super Erecta® Hot Shelf & Enclosure Kit

- Use shelves by themselves or combined with other Super Erecta shelving

#### Heated Shelf Workstation

- Stainless steel work surface provides ample space for food prep
- Heated Shelf ensures that prepared items stay hot until they are ready for pickup or delivery

#### Metro2Go Hot Station

- Available in both grab & go and pass-thru setups
- Featuring door handles with Microban antimicrobial protection built in to protect from bacteria growth

#### HS2448

Super Erecta® Hot Shelf, 24" x 48"

#### HS2448-EKIT

Super Erecta® Hot Enclosure Kit, 24" x 48"

#### PU8CD-HS1842

Metro2Go Hot Station, 8 Compartments

#### EZHS48W-KIT

Super Erecta® Hot Shelving Workstation, 24" x 48"



More items available

### Mobile Order Pick Up Stations

Eliminate congestion around counter spaces in the front-of-house while offering customers and delivery drivers a convenient designated spot to pick up orders. The Metro® To-Go Stations in black epoxy finish highlight to-go orders and allows packaged product to take center stage. Adjustable shelves hold orders of any size and label holders allow for easy organization.

- Inlays prevent small items from falling through wire shelves
- 'Mobile Order Pick Up' sign included

**CR1824TGSR** 24"w x 18"d x 62¼"h

**CR1836TGSR** 36"w x 18"d x 62¼"h

**CR1848TGSR** 48"w x 18"d x 62¼"h



## Warm & Waiting

There are a variety of heated holding options available for placing carryout orders (or storing catering orders) that are waiting to be picked up. From pass-thru shelving for the front of house to enclosed cabinets for the back of house, you can find the right product to support both your volume and space requirements.



## Curbside Pick-Up & Delivery Cart

An efficient solution for online order picking to streamline the process and increase production. The perfect work station, with a writing utensil tray, paper bag holder and hooks for plastic bags. Also great for meal delivery in schools. Made in the USA. NSF.

- Lightweight aluminium construction
- Two shelves for additional storage
- Bumpers prevent damage to store fixtures



ALMCS-36-224-RCUH-HF 24"w x 45¾"l x 26¼"h

## Combination Heater/Proofer Cabinets

Keeps food warm while waiting for pick up and evenly distributes heat. NSF, ETLus.

- Holds (35) 18" x 26" pans
- Heavy-duty aluminum construction (non-insulated)
- Cabinet door opens at 270°
- 21"w x 32¾"l x 66½"h
- Removable drawer

NHPL-1836-ECOC w/Analog Drawer  
NHPL-1836C-DGT w/Digital Drawer



## Order Staging Carts

The mobile design of these carts go where they're needed, making it easy to stage and assemble orders for pick-up. Bin holders conveniently store condiments, utensils and other add-ons.

- Solid stainless steel top

CR2430DSS 30"w x 24"d x 65¾"h

CR2448DSS 48"w x 24"d x 65¾"h



## Mise en Place

Every chef knows the secret to accuracy and efficiency is an organized, well-stocked *mise en place*. Now your carryout order accuracy and efficiency can benefit from that same attention to detail. Set up a station with everything employees need to put orders together at an arm's reach, and help keep customer satisfaction up by minimizing order errors.



### GoBag® Pizza Delivery Bags

Keep customers happy by delivering hot and fresh pizzas, thanks to the thick, sturdy polyester fabric and high-density insulation of the GoBag®. Heavy-duty, sewn-in straps and a ticket pouch make doing the job quickly and safely easier on employees too.

- Breathable material protects food quality
- Machine washable



Carries (2) 16" or (3) 14" Pizza Boxes

**GBP216110** Black

**GBP216521** Red

Carries (3) 18" or (4) 16" Pizza Boxes

**GBP318110** Black

**GBP318521** Red

Carries (2) 20" or (3) 18" Pizza Boxes

**GBP220521** Red

Carries (5) 18" or (6+) 16" Pizza Boxes

**GBP518110** Black



### GoBag® Insulated Food Carriers

High-density insulation keeps temperature in the safe zone during both holding and transport to the customer, whether it's picked up curbside or delivered to their door. Folding bags feature easy-to-clean vinyl interiors.

- Thick, sturdy nylon fabric
- Heavy-duty sewn-in nylon straps



Red

**GBD151212521**

Sandwich Bag, 12" w x 15" l x 12" h

**GBD211517521**

Stadium Bag, Top Loading, 21" w x 15" l x 17" h

**GBD181412521**

Jumbo, Top Loading, 18" w x 14" l x 12" h

Black

**GBD13913110**

Small, Top Loading, 9" w x 13" l x 13" h

**GBD101011110**

Small, Folding, 10" w x 10" l x 11" h

**GBD151212110**

Sandwich Bag, 12" w x 15" l x 12" h

**GBD121515110**

Medium, Folding, 15" w x 12" l x 15" h

**GBD211414110**

Large, Top Loading, 14" w x 21" l x 14" h

**GBD211414110**

Large, Top Loading, 21" w x 14" l x 14" h, w/Thermal Divider

**GBD211417110**

Large, Folding, 14" w x 21" l x 17" h

**GBD181412110**

Jumbo, Top Loading, 18" w x 14" l x 12" h

# FOODIE FORECASTING

A LOOK AT SOME PREDICTED UP + COMING MENU TRENDS



## Food & Menu

- Alternative proteins  
*nuts, seeds*
- Plant-based proteins
- Mushrooms
- Meatless dishes
- Creative condiments
- Sustainability
- Pie
- Underutilized meat cuts  
*offal, chicken thighs, heart, etc.*



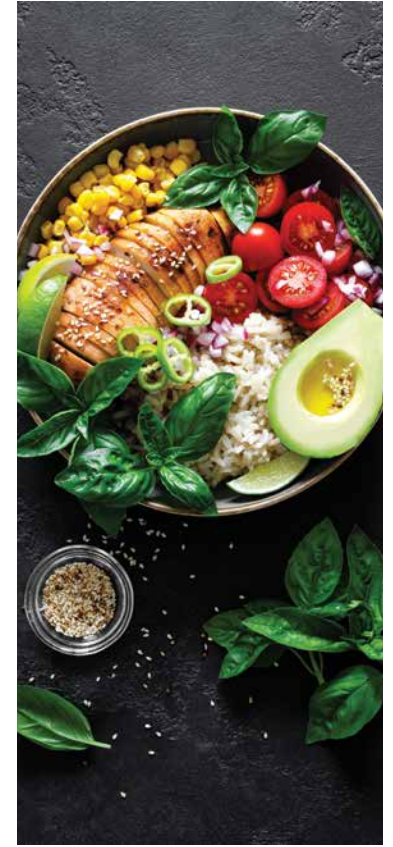
## Flavors & Ingredients

- Hibiscus
- Smoked
- Spicy



## Beverage

- Non-dairy milks
- CBD-infused
- Hard seltzer



## Past Rising Trends Here to Stay

- Bowls  
*rice, grain bowls topped with proteins & veggies*
- Canned & bottled cocktails
- Non-alcoholic cocktails
- Fried chicken sandwiches
- Meal kits

# TriMark®

Foodservice Equipment, Supplies and Design

## **SAN DIEGO**

10101 Old Grove Road,  
San Diego, CA, 92131  
858-530-1800



**800.942.1101**



**WestRegionSales@trimarkusa.com**

ATRE202102

## **AUSTIN**

800-942-1101

## **DALLAS**

972-732-1722

## **FT. LAUDERDALE**

954-202-9606

## **GULF COAST**

800-942-1101

## **PALM SPRINGS**

760-340-2424

## **PHOENIX**

602-528-3485

## **LAS VEGAS**

800-942-1101

## **HOUSTON**

281-498-3335

## **LOS ANGELES**

323-291-0848

## **MIAMI**

305-485-8800

## **RENO / TAHOE**

800-942-1101

## **SACRAMENTO**

916-551-1458

## **TUCSON**

920-742-6108

## **SAN FRANCISCO**

415-391-8641

## **ORANGE COUNTY**

858-530-1800

Allow 2-4 weeks delivery on special order items.

Every effort has been made to verify the accuracy of all data contained in this publication, however, we cannot assume responsibility for errors or omissions.



Look Inside for the Current Trends Dominating the Foodservice Industry

ECLECTIC TABLETOP • VINTAGE & NOSTALGIA • VISIBLE CLEANLINESS  
TIKTOK • CATERING REIMAGINED • TAKE-OUT & DELIVERY

